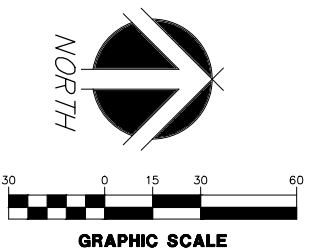


SIGN LEGEND

- ① -REMOVE EXISTING R2-1 (SPEED LIMIT) SIGN AND POST
-RESET R2-1 ON SALVAGED POST
- ② -REMOVE EXISTING M1-1, M4-5, AND M6-1 SIGN AND POST
-RESET M1-1, M4-5, AND M6-1 ON SALVAGED POST
- ③ -REMOVE EXISTING D1-1, AND GENERAL RECREATIONAL GUIDE SIGN AND POST
-RESET D1-1 AND GENERAL RECREATIONAL GUIDE SIGN ON SALVAGED POST
- ③⑦ -INSTALL W9-1 SIGN ON BREAKAWAY POST
- ③⑧ -INSATLL W9-2 SIGN ON BREAKAWAY POST
- ③⑨ -INSATLL R3-7R SIGN ON BREAKAWAY POST



ENGINEER
KRB

DRAWN BY
BAV

North Liberty, Iowa
3610003
October 1, 2011

REVISIONS



Building Strong Communities

1740 Lininger Lane
North Liberty, IA 52317
319-626-9090
fax 319-626-9095

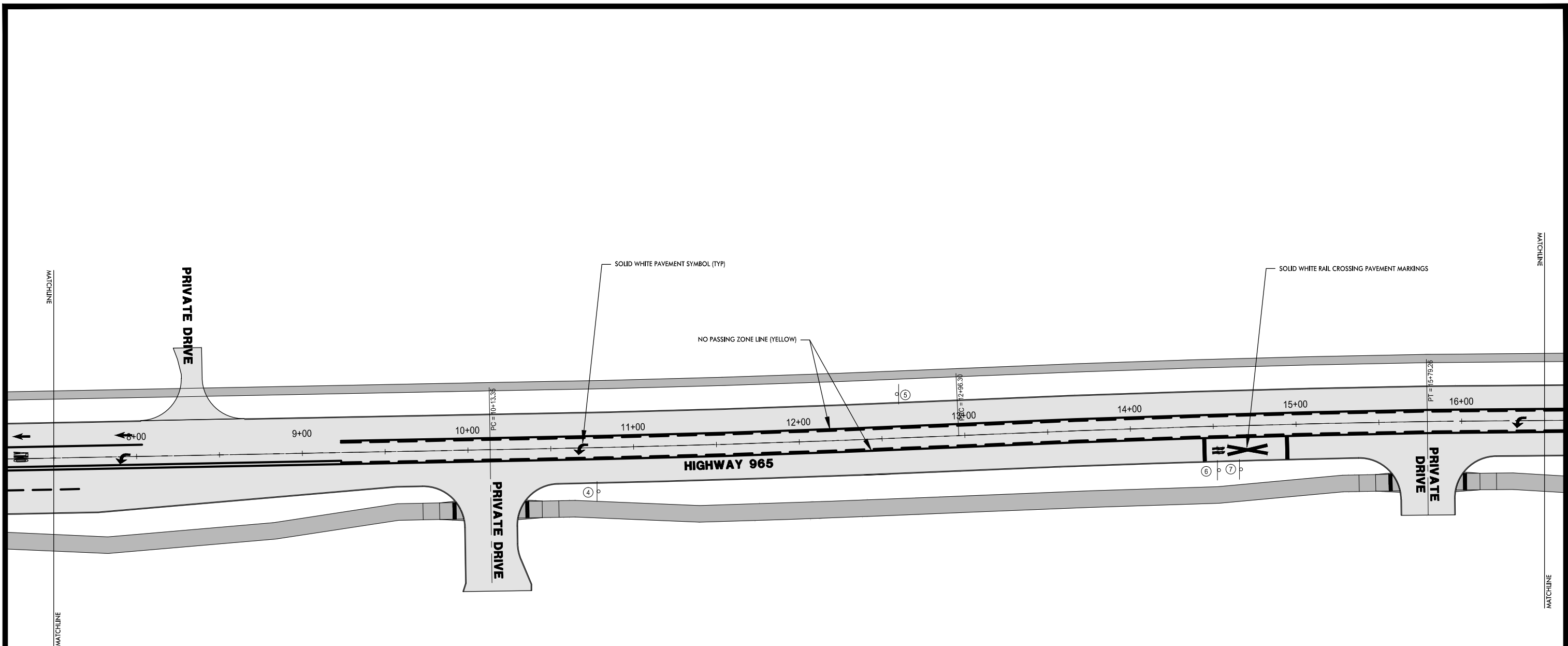
HIGHWAY 965 PHASE 2 IMPROVEMENTS
NORTH LIBERTY, IOWA

PAVEMENT MARKINGS

STP-U-5557(617)--70-52

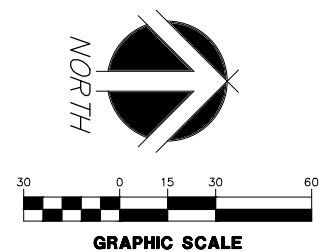
SHEET NO.

J.34

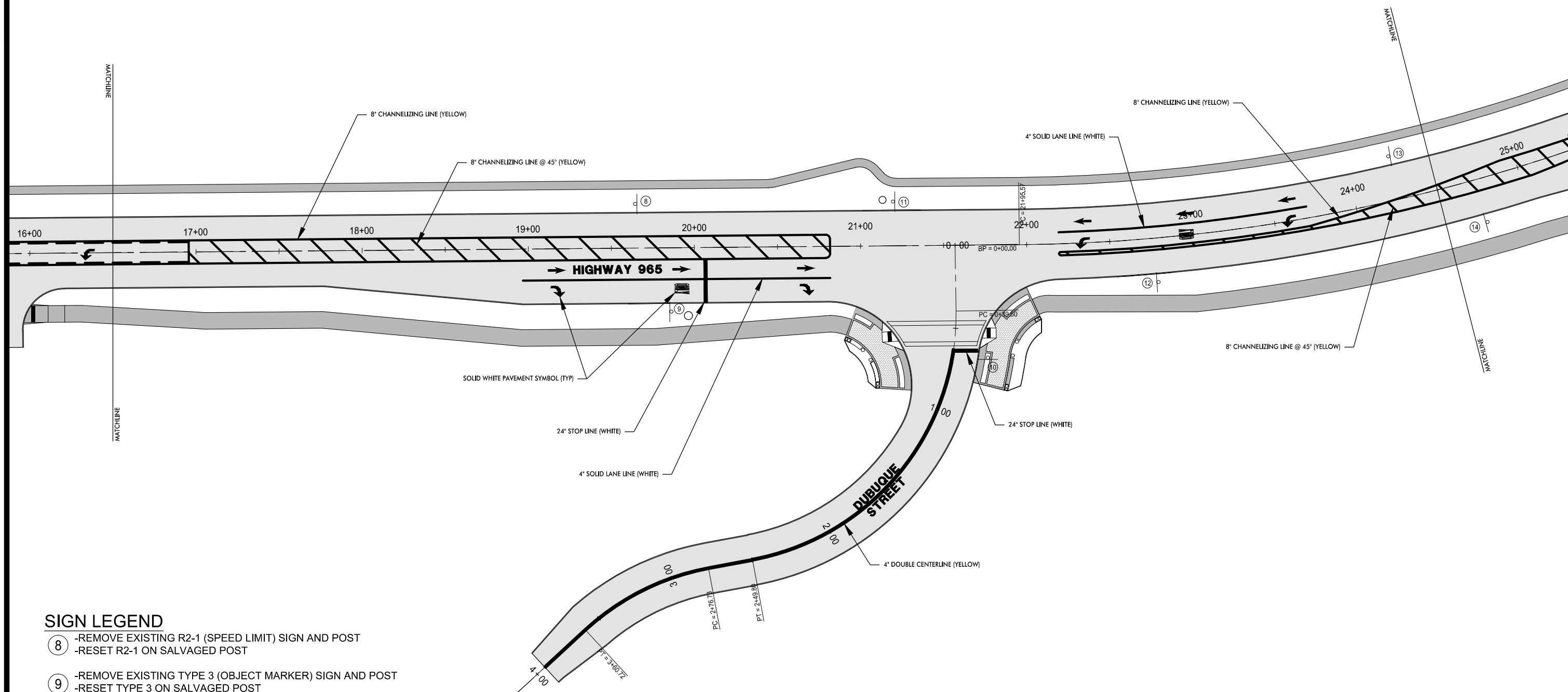


SIGN LEGEND

- ④ -REMOVE EXISTING W6-1 (DIVIDED HIGHWAY) SIGN AND POST
- ⑤ -REMOVE EXISTING W14-3 (NO PASSING) SIGN AND POST
-RESET W14-3 ON SALVAGED POST
- ⑥ -REMOVE EXISTING W10-1 (RAILROAD CROSSING) SIGN AND POST
-RESET W10-1 ON SALVAGED POST
- ⑦ -REMOVE EXISTING W1-4 (HORIZONTAL ALIGNMENT) SIGN AND POST

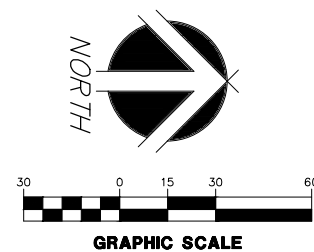


<div>ENGINEER KRB</div> <div>CHECKED BY KRB</div> <div>DRAWN BY BAV</div> <div>FIELD BOOK NO. 10-03-06</div> <div>North Liberty, Iowa 3610003 October 1, 2011</div>	<div>REVISIONS</div> <div><div></div><div></div><div></div><div></div></div>	<div><div><div></div><div></div><div></div></div><div>McCLURE[™] ENGINEERING CO.</div></div> <div>Building Strong Communities</div> <div>1740 Lininger Lane North Liberty, IA 52317 319-626-9090 fax 319-626-9095</div>	<div>HIGHWAY 965 PHASE 2 IMPROVEMENTS</div> <div>NORTH LIBERTY, IOWA</div>	<div>PAVEMENT MARKINGS</div>	<div>STP-U-5557(617)--70-52</div>	<div>SHEET NO.</div> <div>J.35</div>
---	--	---	--	------------------------------	-----------------------------------	--------------------------------------



SIGN LEGEND

- ⑧ -REMOVE EXISTING R2-1 (SPEED LIMIT) SIGN AND POST
-RESET R2-1 ON SALVAGED POST
- ⑨ -REMOVE EXISTING TYPE 3 (OBJECT MARKER) SIGN AND POST
-RESET TYPE 3 ON SALVAGED POST
- ⑩ -REMOVE EXISTING R1-1 (STOP) SIGN AND POST
-RESET R1-1 ON SALVAGED POST 10' NORTH
- ⑪ -REMOVE EXISTING TYPE 3 (OBJECT MARKER) SIGN AND POST
-RESET TYPE 3 ON SALVAGED POST
- ⑫ -REMOVE EXISTING R2-1 (SPEED LIMIT) SIGN AND POST
-RESET R2-1 ON SALVAGED POST 7' WEST
- ⑬ -REMOVE EXISTING W6-1 (DIVIDED HIGHWAY) SIGN AND POST



ENGINEER
KRB

DRAWN BY
BAV

North Liberty, Iowa
3610003
October 1, 2011

REVISIONS



Building Strong Communities

1740 Lininger Lane
North Liberty, IA 52317
319-626-9090
fax 319-626-9095

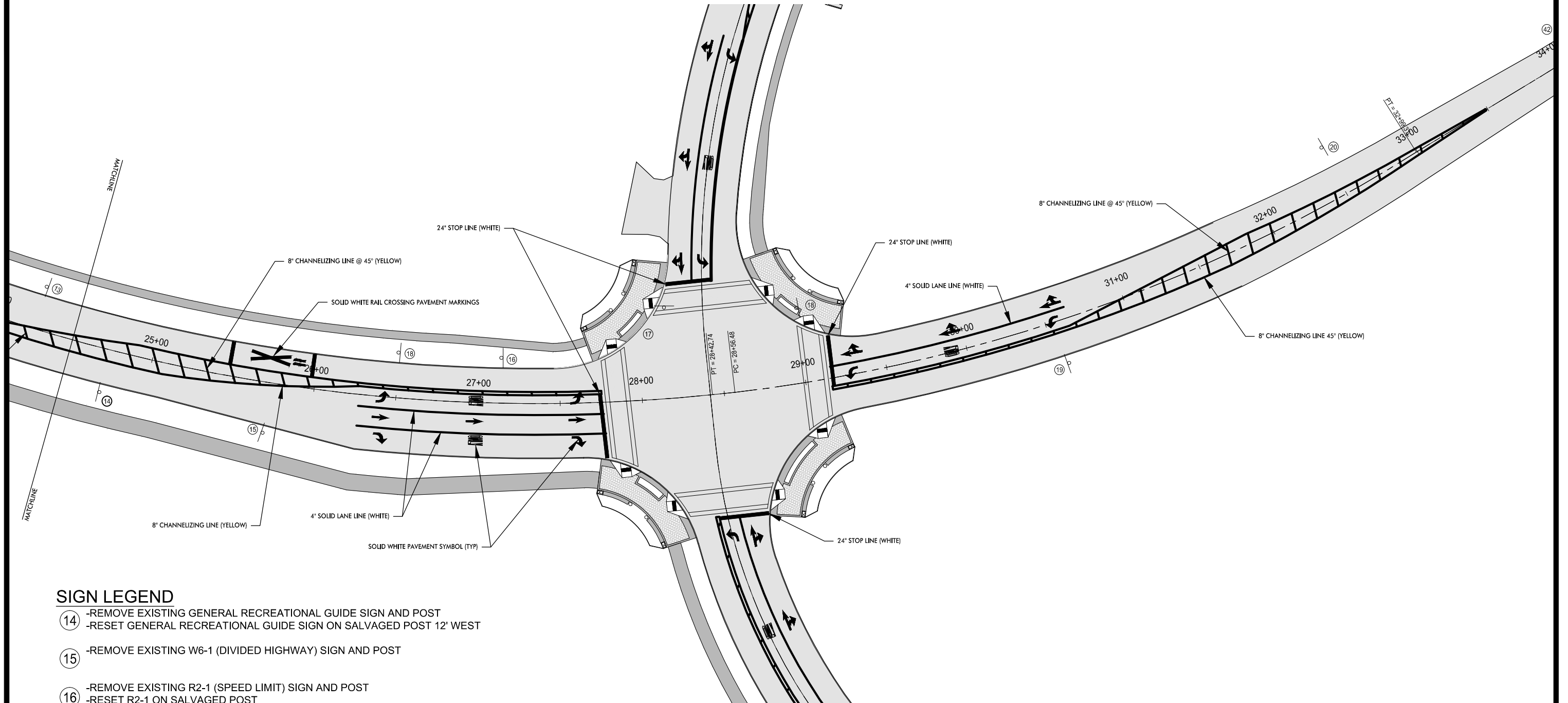
HIGHWAY 965 PHASE 2 IMPROVEMENTS
NORTH LIBERTY, IOWA

PAVEMENT MARKINGS

STP-U-5557(617)--70-52

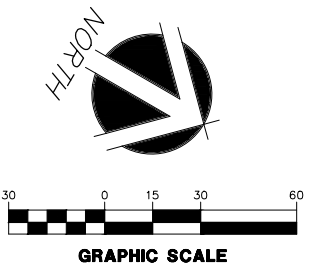
SHEET NO.

J.36



SIGN LEGEND

- ⑭ -REMOVE EXISTING GENERAL RECREATIONAL GUIDE SIGN AND POST
-RESET GENERAL RECREATIONAL GUIDE SIGN ON SALVAGED POST 12' WEST
- ⑮ -REMOVE EXISTING W6-1 (DIVIDED HIGHWAY) SIGN AND POST
- ⑯ -REMOVE EXISTING R2-1 (SPEED LIMIT) SIGN AND POST
-RESET R2-1 ON SALVAGED POST
- ⑰ -REMOVE EXISTING R1-1 (STOP) SIGN AND POST
-RESET R1-1 ON SALVAGED POST 25' WEST
- ⑱ -REMOVE EXISTING W10-1 (RAILROAD CROSSING) SIGN AND POST NORTH OF 240TH STREET
-RESET W10-1 ON SALVAGED POST SOUTH OF 240TH STREET
- ⑲ -REMOVE EXISTING R2-1 (SPEED LIMIT) SIGN AND POST
-RESET R2-1 ON SALVAGED POST
- ⑳ -REMOVE EXISTING GENERAL RECREATIONAL GUIDE SIGN AND POST
-RESET GENERAL RECREATIONAL GUIDE SIGN ON SALVAGED POST
- ④② -INSTALL W3-3 SIGN ON BREAKAWAY POST
(SIGN SHALL BE INSTALL AT STATION 35+00.00)



ENGINEER
KRB

DRAWN BY
BAV

CHECKED BY
KRB

North Liberty, Iowa
3610003
October 1, 2011

REVISIONS
.
.
.
.



Building Strong Communities

1740 Lininger Lane
North Liberty, IA 52317
319-626-9090
fax 319-626-9095

HIGHWAY 965 PHASE 2 IMPROVEMENTS
NORTH LIBERTY, IOWA

PAVEMENT MARKINGS

STP-U-5557(617)--70-52

SHEET NO.

J.37