

DETOUR ROUTE LEGEND

- - - - - TWO-WAY TRAFFIC
- ➔ SIGNED DETOUR ROUTES

**CONSTRUCTION AREA
(WEST SIDE OF FRONT STREET)**

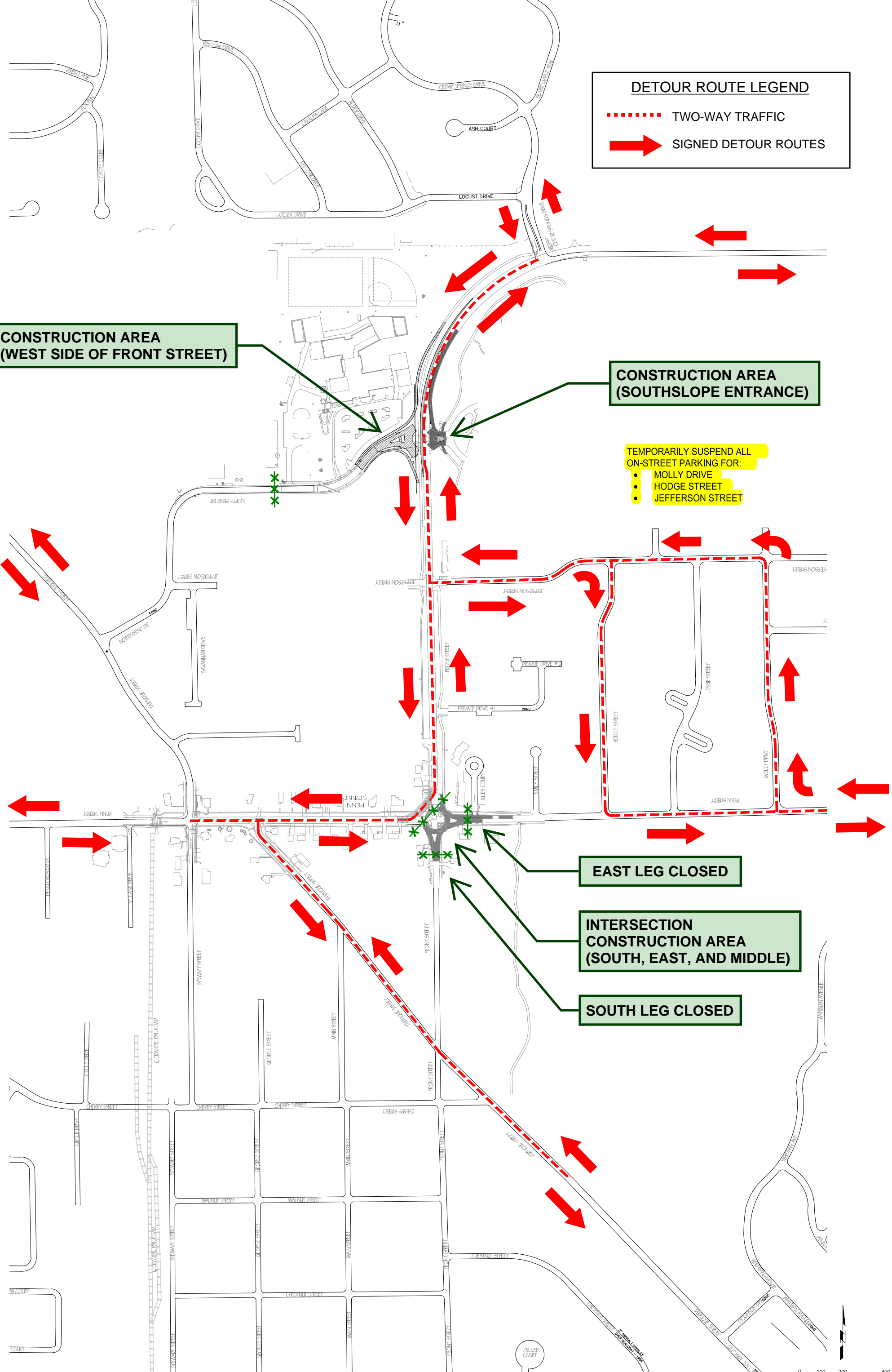
**CONSTRUCTION AREA
(SOUTHSLOPE ENTRANCE)**

- TEMPORARILY SUSPEND ALL ON-STREET PARKING FOR:
- MOLLY DRIVE
 - HODGE STREET
 - JEFFERSON STREET





EAST LEG CLOSED

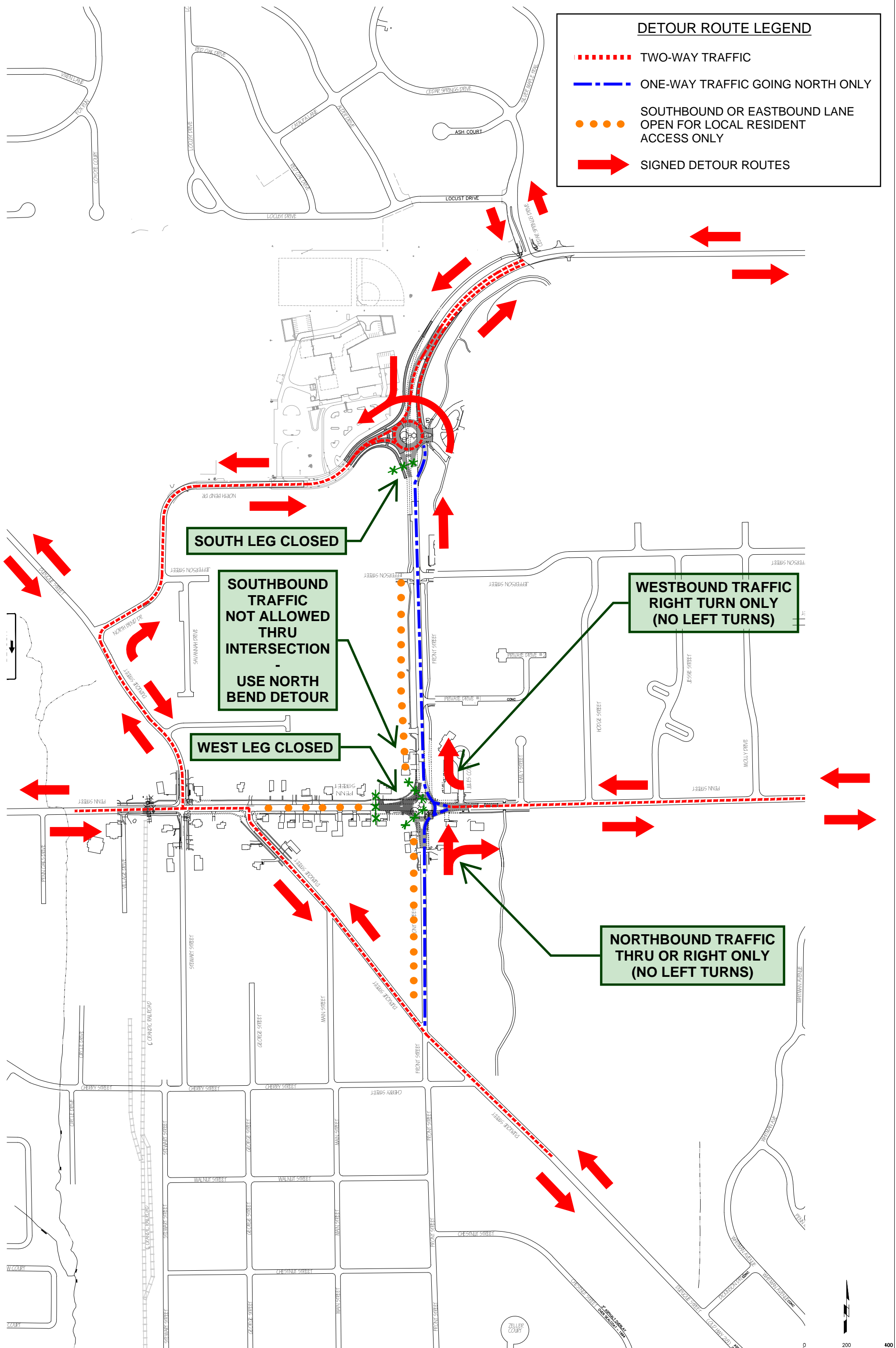
**INTERSECTION
CONSTRUCTION AREA
(SOUTH, EAST, AND MIDDLE)**

SOUTH LEG CLOSED



DETOUR ROUTE LEGEND




-  TWO-WAY TRAFFIC
-  ONE-WAY TRAFFIC GOING NORTH ONLY
-  SOUTHBOUND OR EASTBOUND LANE OPEN FOR LOCAL RESIDENT ACCESS ONLY
-  SIGNED DETOUR ROUTES

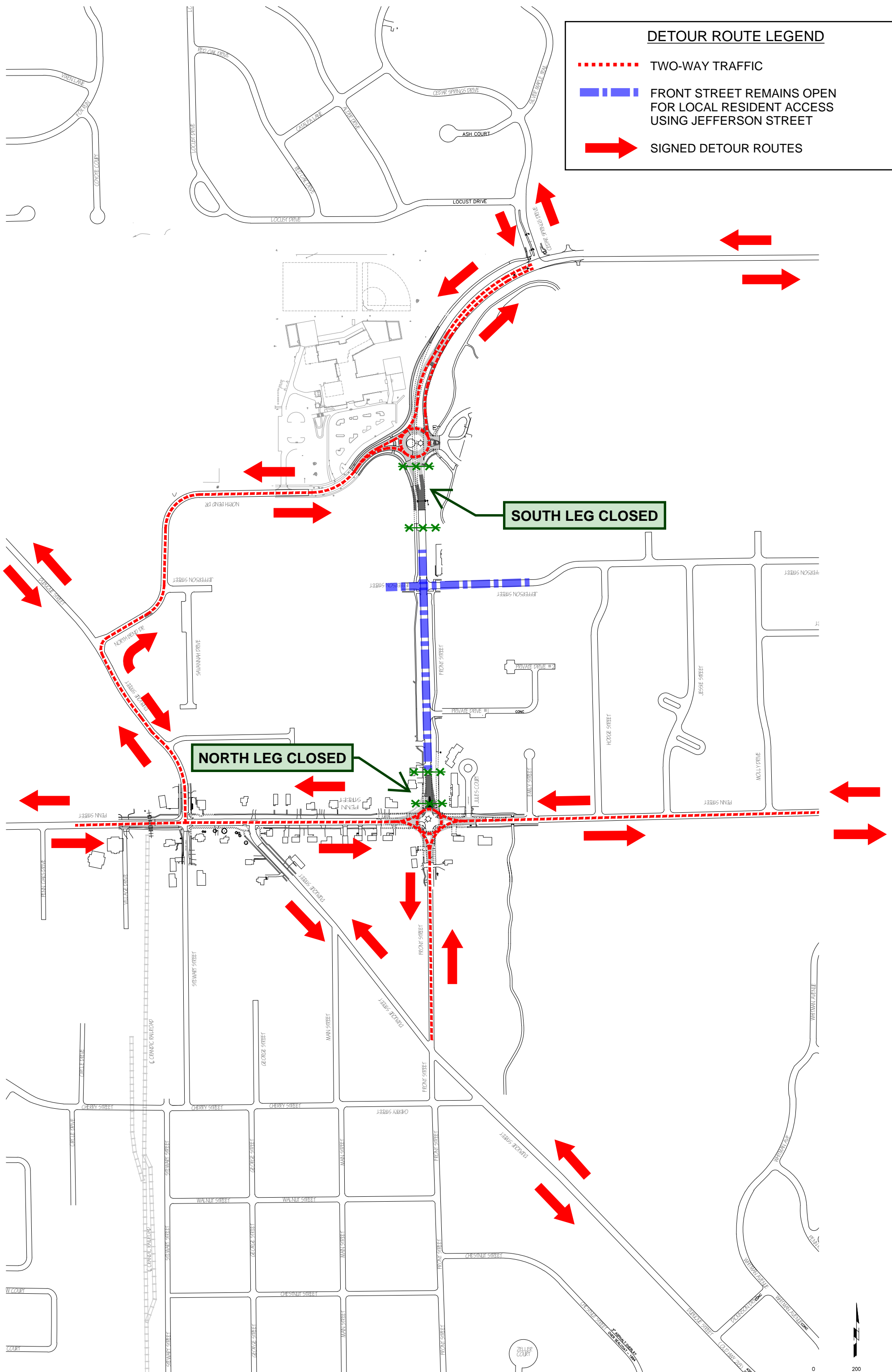


PENN AND FRONT CORRIDOR IMPROVEMENTS - STAGE 2B - OVERALL DETOUR AND PHASING

0 200 400
SCALE IN FEET

DETOUR ROUTE LEGEND

-  TWO-WAY TRAFFIC
-  FRONT STREET REMAINS OPEN FOR LOCAL RESIDENT ACCESS USING JEFFERSON STREET
-  SIGNED DETOUR ROUTES



PENN AND FRONT CORRIDOR IMPROVEMENTS - STAGE 3 - OVERALL DETOUR AND PHASING

