



ONLINE PROJECT OPEN HOUSE

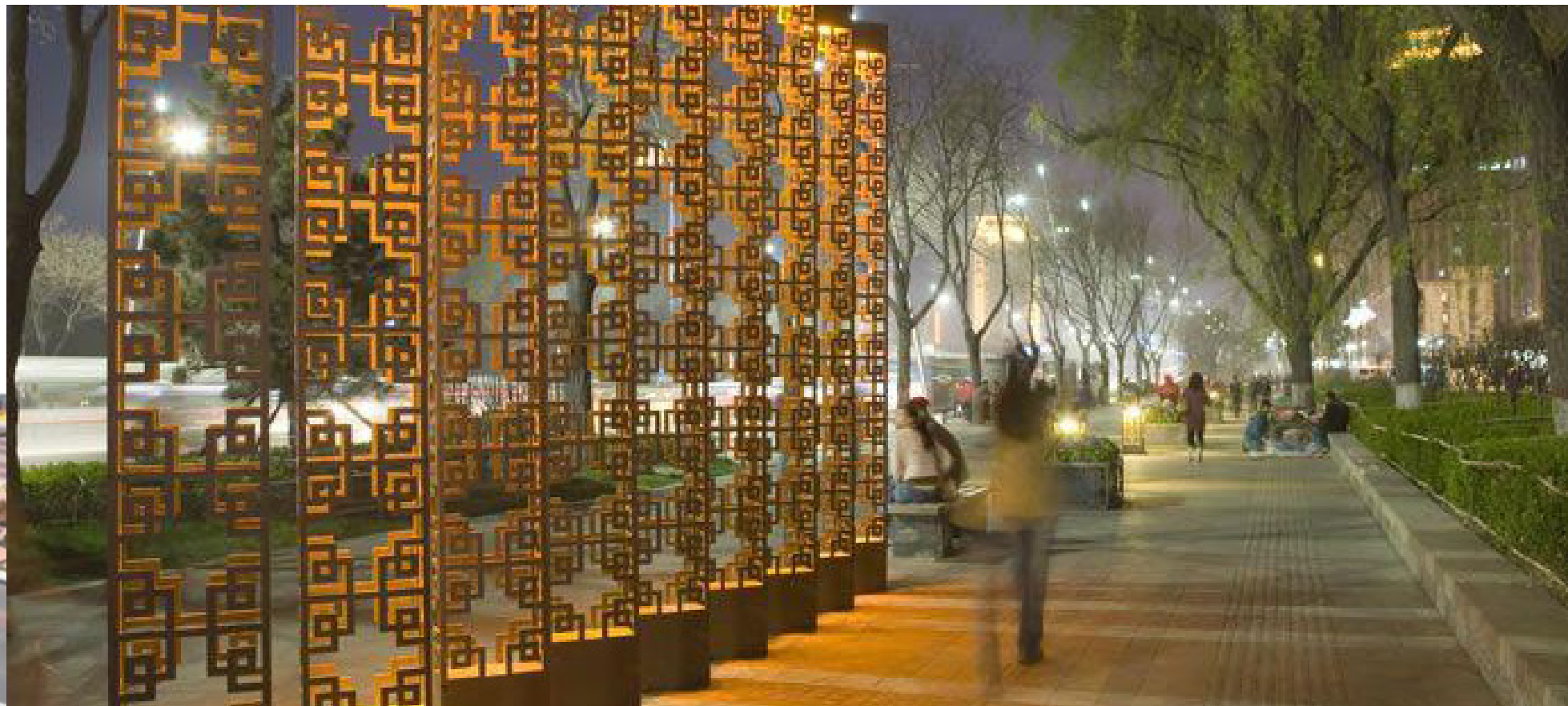
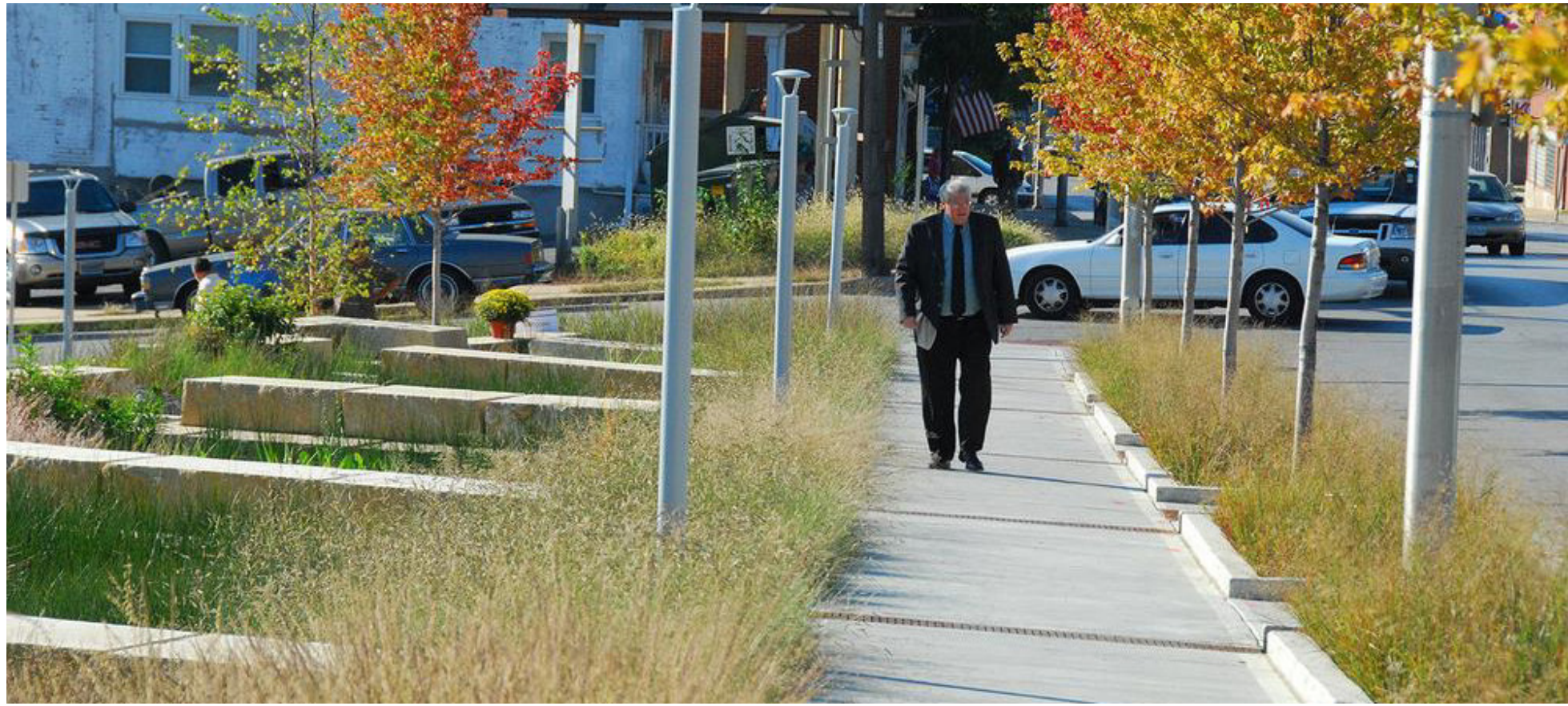
March 17 Dubuque Street at Cherry & Front
March 24 City Hall Future Civic Campus
March 31 Jones Boulevard and Planning
Each Thursday starting at noon.

ONLINE PROJECT OPEN HOUSE

March 17 Dubuque Street at Cherry & Front
March 24 City Hall Future Civic Campus
March 31 Jones Boulevard and Planning
Each Thursday starting at noon.

ONLINE PROJECT OPEN HOUSE





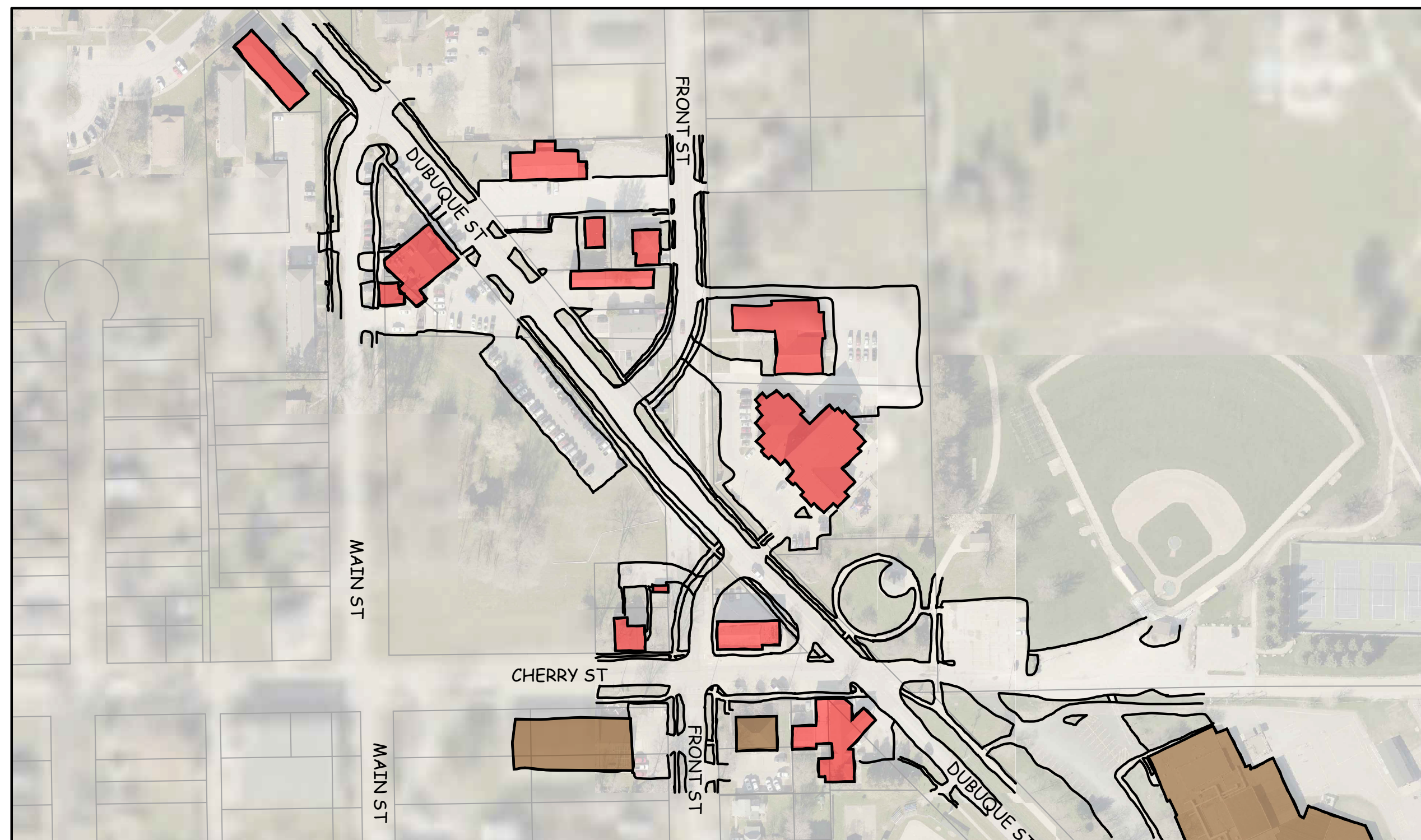
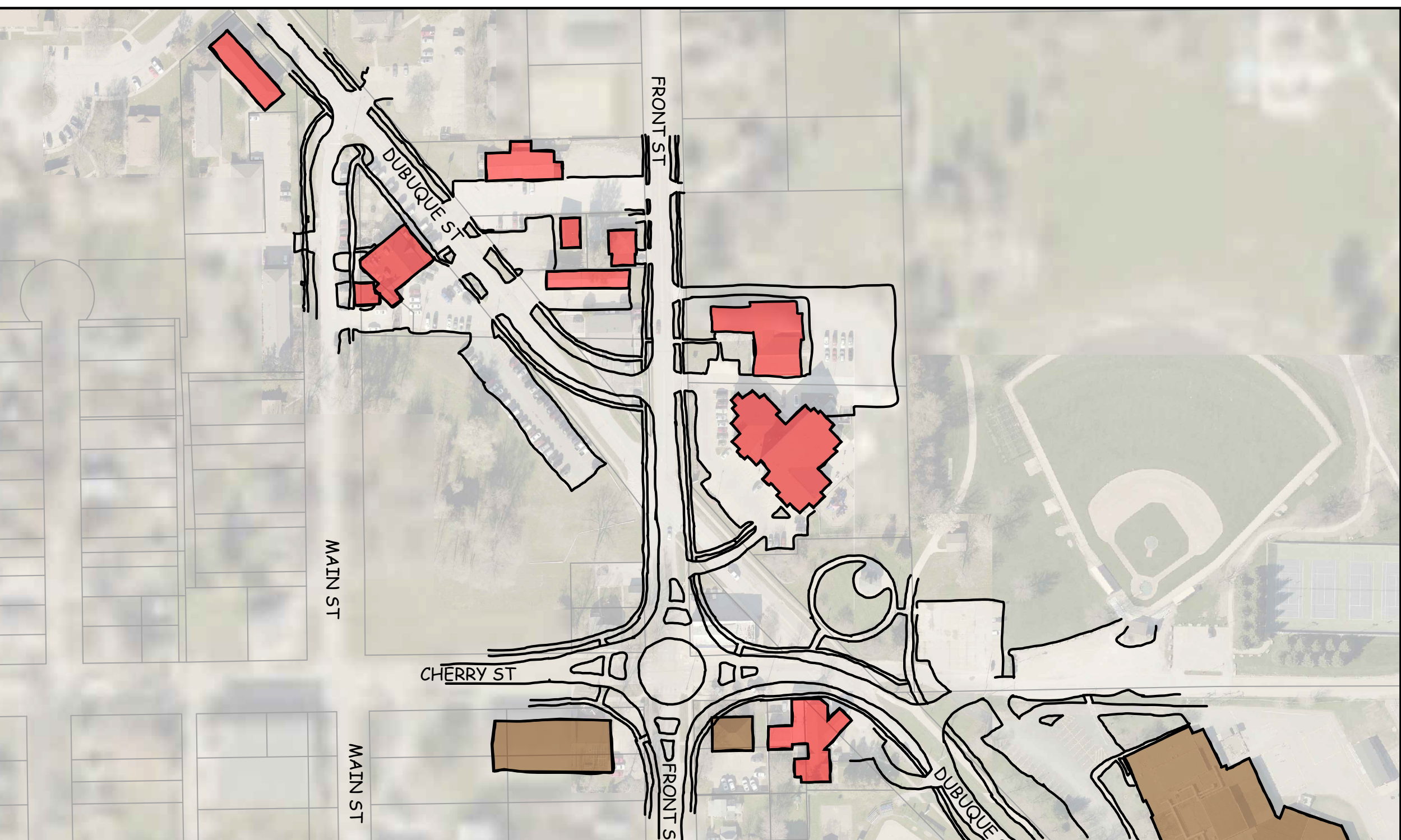
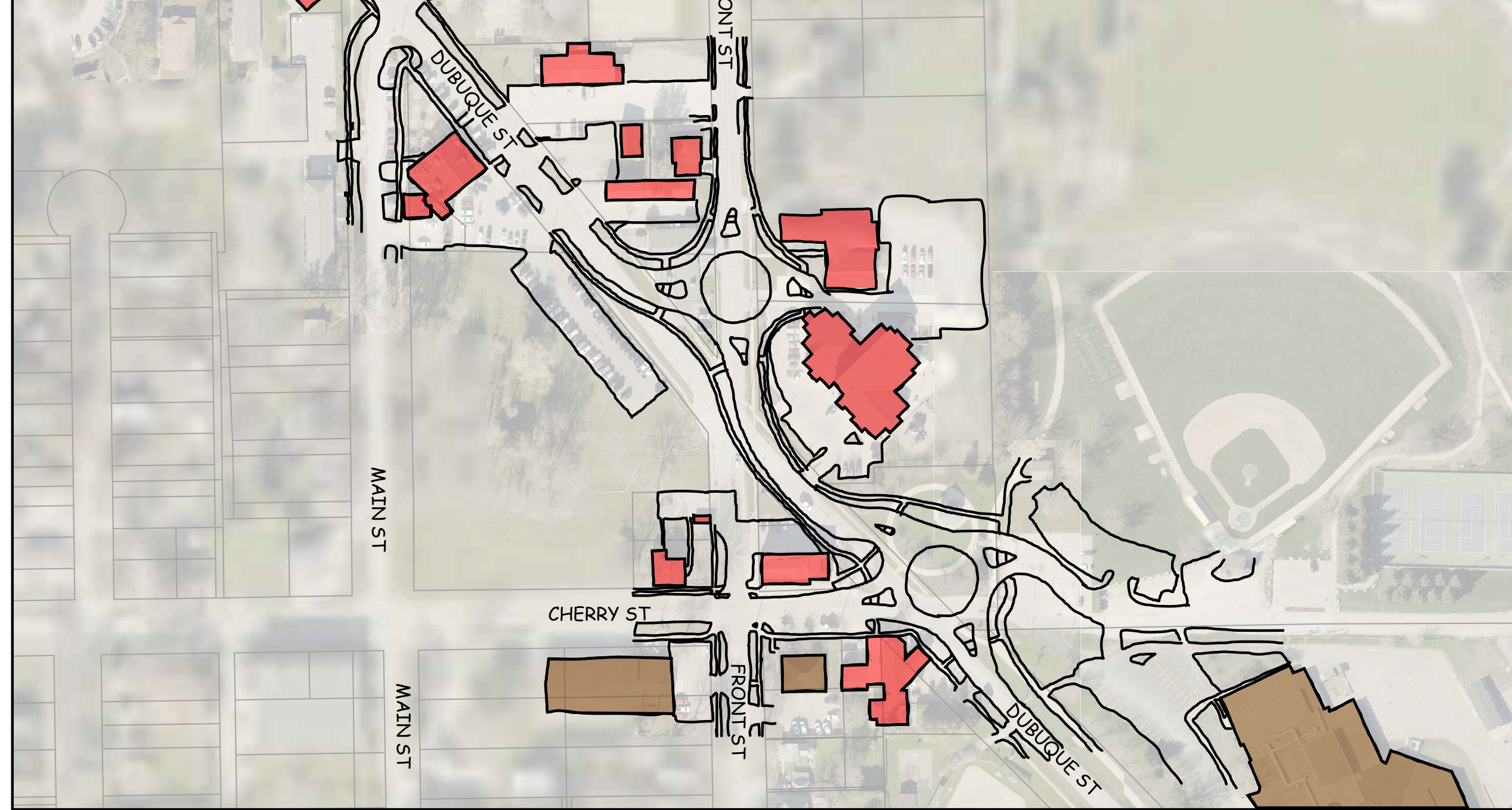
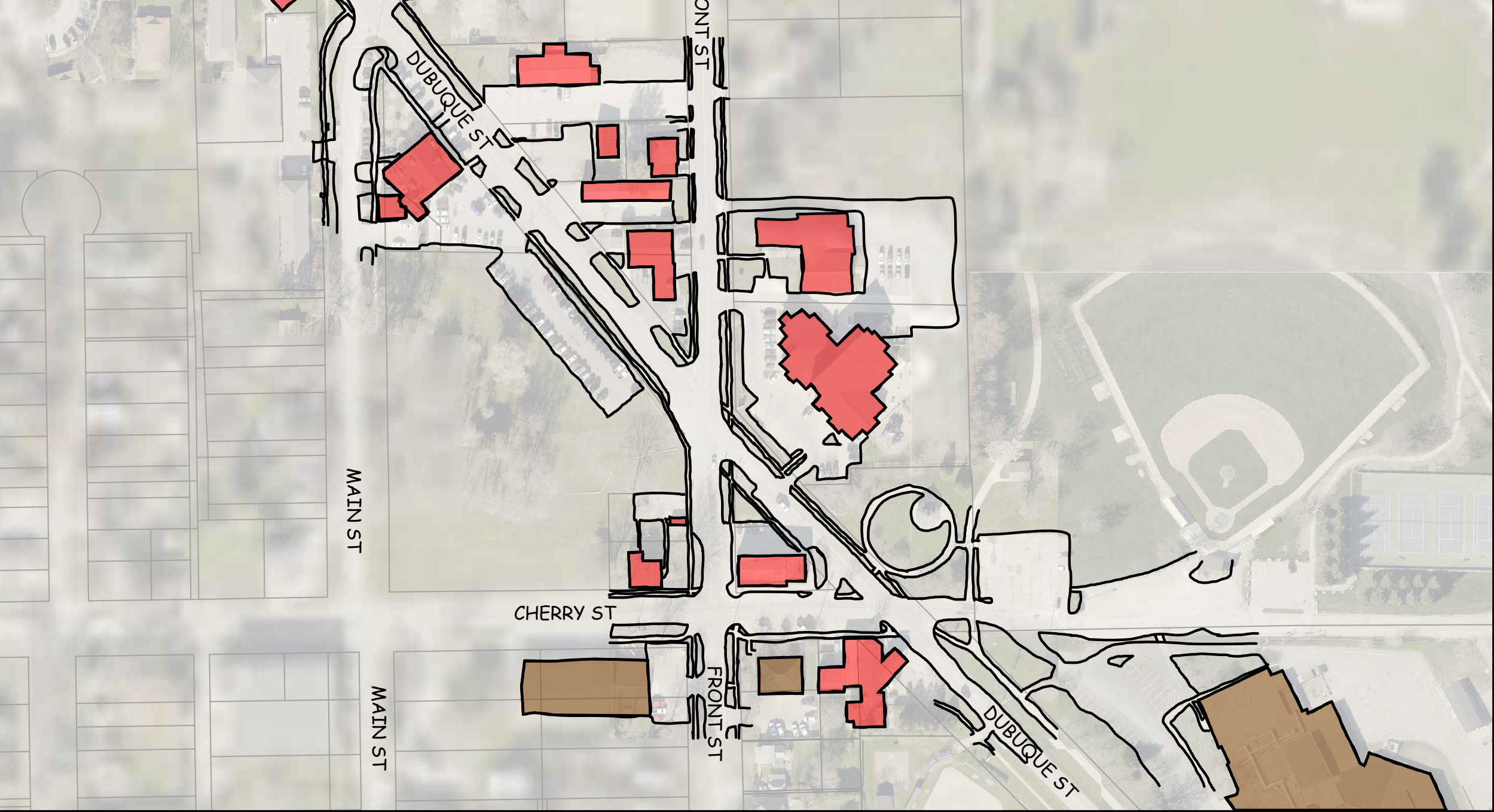
ARTISTIC CROSSWALK

SCULPTURAL ELEMENTS / ART

PENN STREET

FUNKY BENCHES









DUBUQUE ST

FRONT ST

MAIN ST

MAIN ST

CHERRY ST

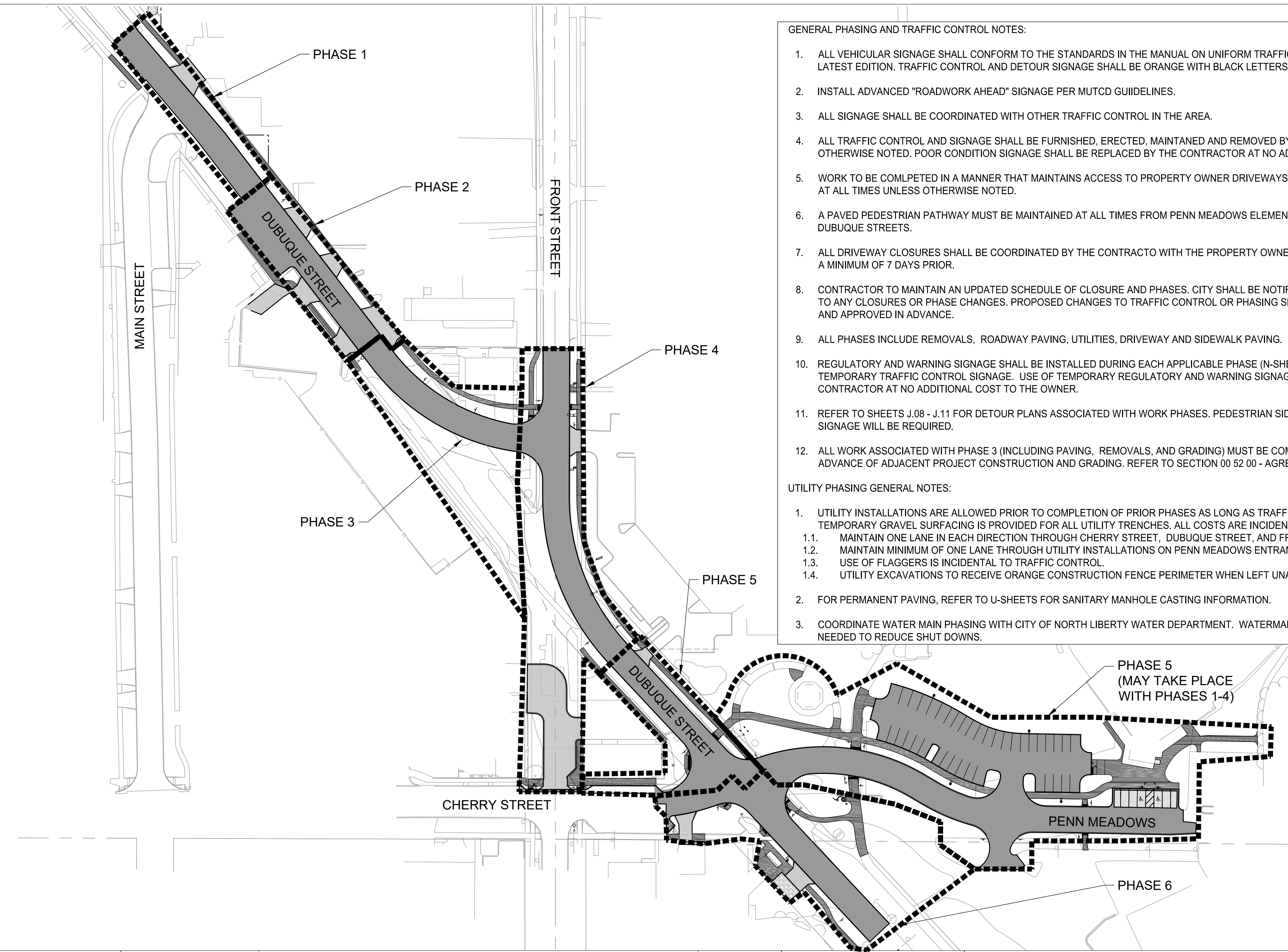
FRONT ST

DUBUQUE ST

GEORGE ST

GEORGE ST

P:\Projects\IC1201070\Deliverables\Drawings\1_Civil\U01-Project Phasing.dwg



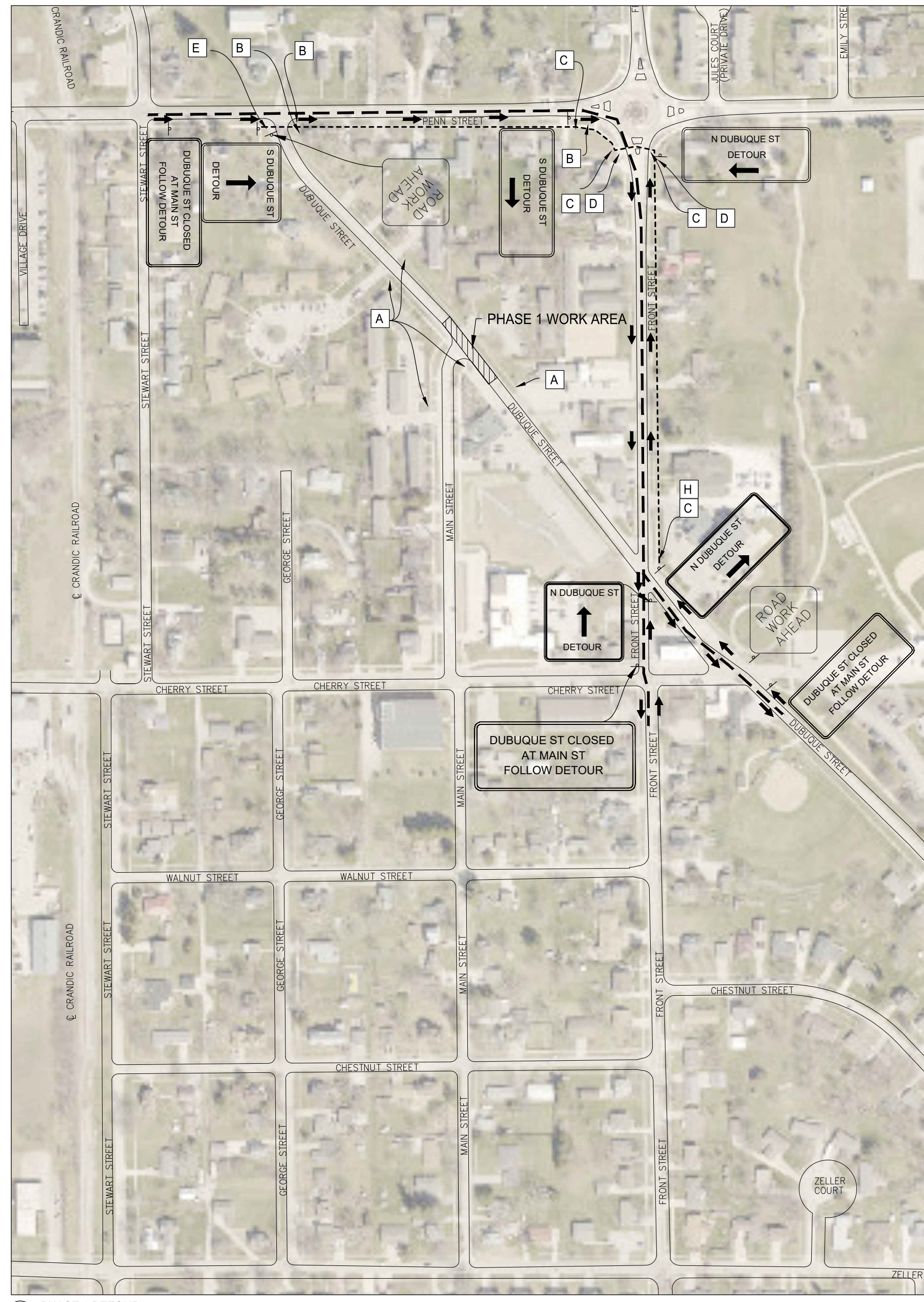
GENERAL PHASING AND TRAFFIC CONTROL NOTES:

1. ALL VEHICULAR SIGNAGE SHALL CONFORM TO THE STANDARDS IN THE MANUAL ON UNIFORM TRAFFIC CONTROL DEVICES (MUTCD) LATEST EDITION. TRAFFIC CONTROL AND DETOUR SIGNAGE SHALL BE ORANGE WITH BLACK LETTERS.
2. INSTALL ADVANCED "ROADWORK AHEAD" SIGNAGE PER MUTCD GUIDELINES.
3. ALL SIGNAGE SHALL BE COORDINATED WITH OTHER TRAFFIC CONTROL IN THE AREA.
4. ALL TRAFFIC CONTROL AND SIGNAGE SHALL BE FURNISHED, ERECTED, MAINTAINED AND REMOVED BY CONTRACTOR UNLESS OTHERWISE NOTED. POOR CONDITION SIGNAGE SHALL BE REPLACED BY THE CONTRACTOR AT NO ADDITIONAL COST TO THE OWNER.
5. WORK TO BE COMPLETED IN A MANNER THAT MAINTAINS ACCESS TO PROPERTY OWNER DRIVEWAYS AND BUILDING ENTRY DOORWAYS AT ALL TIMES UNLESS OTHERWISE NOTED.
6. A PAVED PEDESTRIAN PATHWAY MUST BE MAINTAINED AT ALL TIMES FROM PENN MEADOWS ELEMENTARY TO CHERRY AND/OR DUBUQUE STREETS.
7. ALL DRIVEWAY CLOSURES SHALL BE COORDINATED BY THE CONTRACTOR WITH THE PROPERTY OWNER AND CITY REPRESENTATIVES AT A MINIMUM OF 7 DAYS PRIOR.
8. CONTRACTOR TO MAINTAIN AN UPDATED SCHEDULE OF CLOSURE AND PHASES. CITY SHALL BE NOTIFIED A MINIMUM OF 7 DAYS PRIOR TO ANY CLOSURES OR PHASE CHANGES. PROPOSED CHANGES TO TRAFFIC CONTROL OR PHASING SHALL BE REVIEWED WITH OWNER AND APPROVED IN ADVANCE.
9. ALL PHASES INCLUDE REMOVALS, ROADWAY PAVING, UTILITIES, DRIVEWAY AND SIDEWALK PAVING.
10. REGULATORY AND WARNING SIGNAGE SHALL BE INSTALLED DURING EACH APPLICABLE PHASE (N-SHEETS), UNLESS IN CONFLICT WITH TEMPORARY TRAFFIC CONTROL SIGNAGE. USE OF TEMPORARY REGULATORY AND WARNING SIGNAGE IS TO BE PAID FOR BY THE CONTRACTOR AT NO ADDITIONAL COST TO THE OWNER.
11. REFER TO SHEETS J.08 - J.11 FOR DETOUR PLANS ASSOCIATED WITH WORK PHASES. PEDESTRIAN SIDEWALK CLOSURE AND DETOUR SIGNAGE WILL BE REQUIRED.
12. ALL WORK ASSOCIATED WITH PHASE 3 (INCLUDING PAVING, REMOVALS, AND GRADING) MUST BE COMPLETED BY AUGUST 12, 2022 IN ADVANCE OF ADJACENT PROJECT CONSTRUCTION AND GRADING. REFER TO SECTION 00 52 00 - AGREEMENT.

UTILITY PHASING GENERAL NOTES:

1. UTILITY INSTALLATIONS ARE ALLOWED PRIOR TO COMPLETION OF PRIOR PHASES AS LONG AS TRAFFIC REQUIREMENTS ARE MET AND TEMPORARY GRAVEL SURFACING IS PROVIDED FOR ALL UTILITY TRENCHES. ALL COSTS ARE INCIDENTAL TO UTILITY INSTALLATIONS.
 - 1.1. MAINTAIN ONE LANE IN EACH DIRECTION THROUGH CHERRY STREET, DUBUQUE STREET, AND FRONT STREET.
 - 1.2. MAINTAIN MINIMUM OF ONE LANE THROUGH UTILITY INSTALLATIONS ON PENN MEADOWS ENTRANCE DRIVE.
 - 1.3. USE OF FLAGGERS IS INCIDENTAL TO TRAFFIC CONTROL.
 - 1.4. UTILITY EXCAVATIONS TO RECEIVE ORANGE CONSTRUCTION FENCE PERIMETER WHEN LEFT UNATTENDED AT END OF WORK DAY.
2. FOR PERMANENT PAVING, REFER TO U-SHEETS FOR SANITARY MANHOLE CASTING INFORMATION.
3. COORDINATE WATER MAIN PHASING WITH CITY OF NORTH LIBERTY WATER DEPARTMENT. WATERMAIN WORK TO BE PHASED AS NEEDED TO REDUCE SHUT DOWNS.

P:\Projects\1201070\Deliverables\Drawings\1_Civil\110-Phasing.dwg

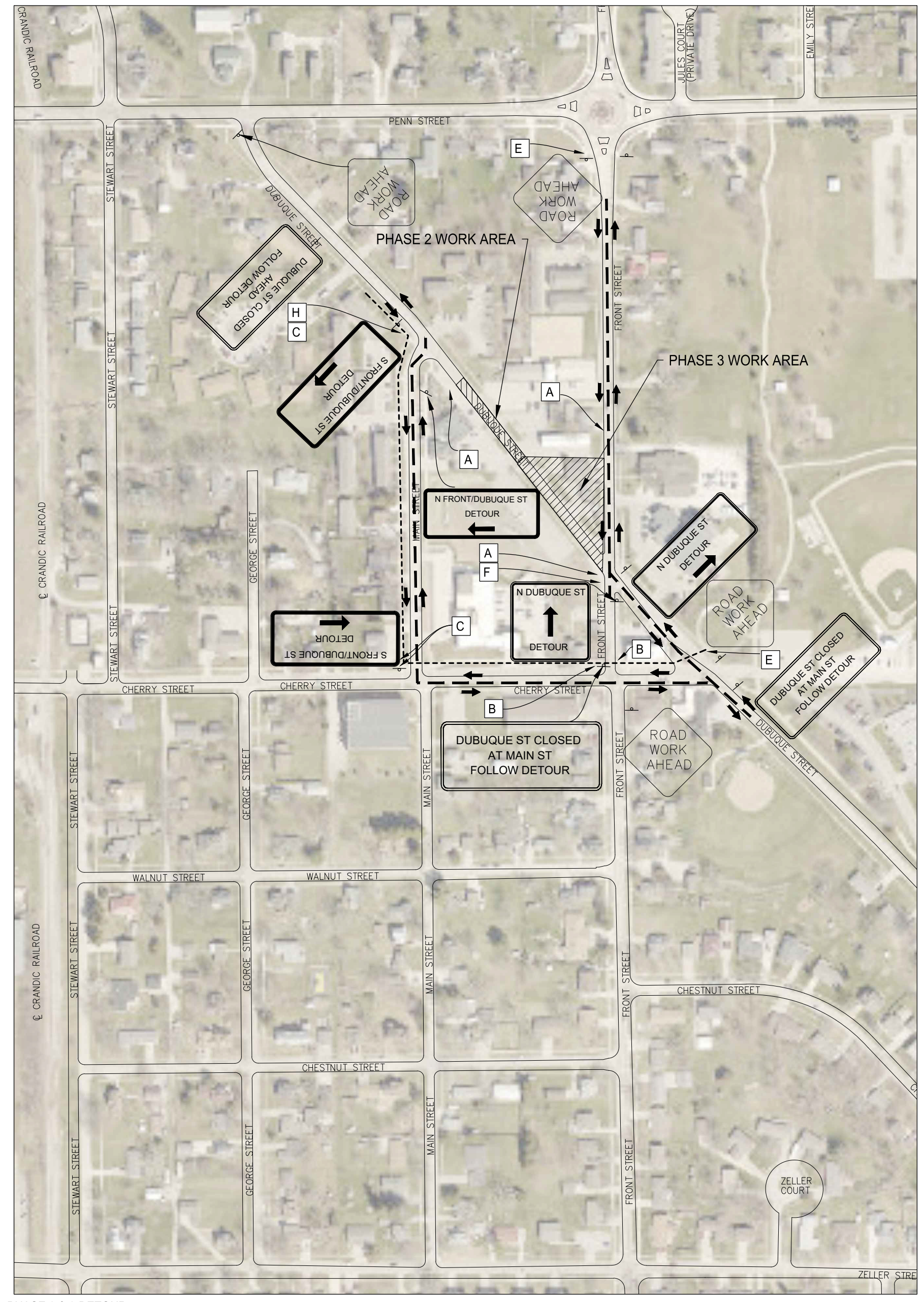


A PHASE 1 DETOUR
1"=300'

DETOUR ROUTE(S)
- - - - -
PEDESTRIAN ROUTE
- - - - -

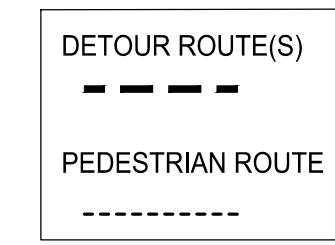
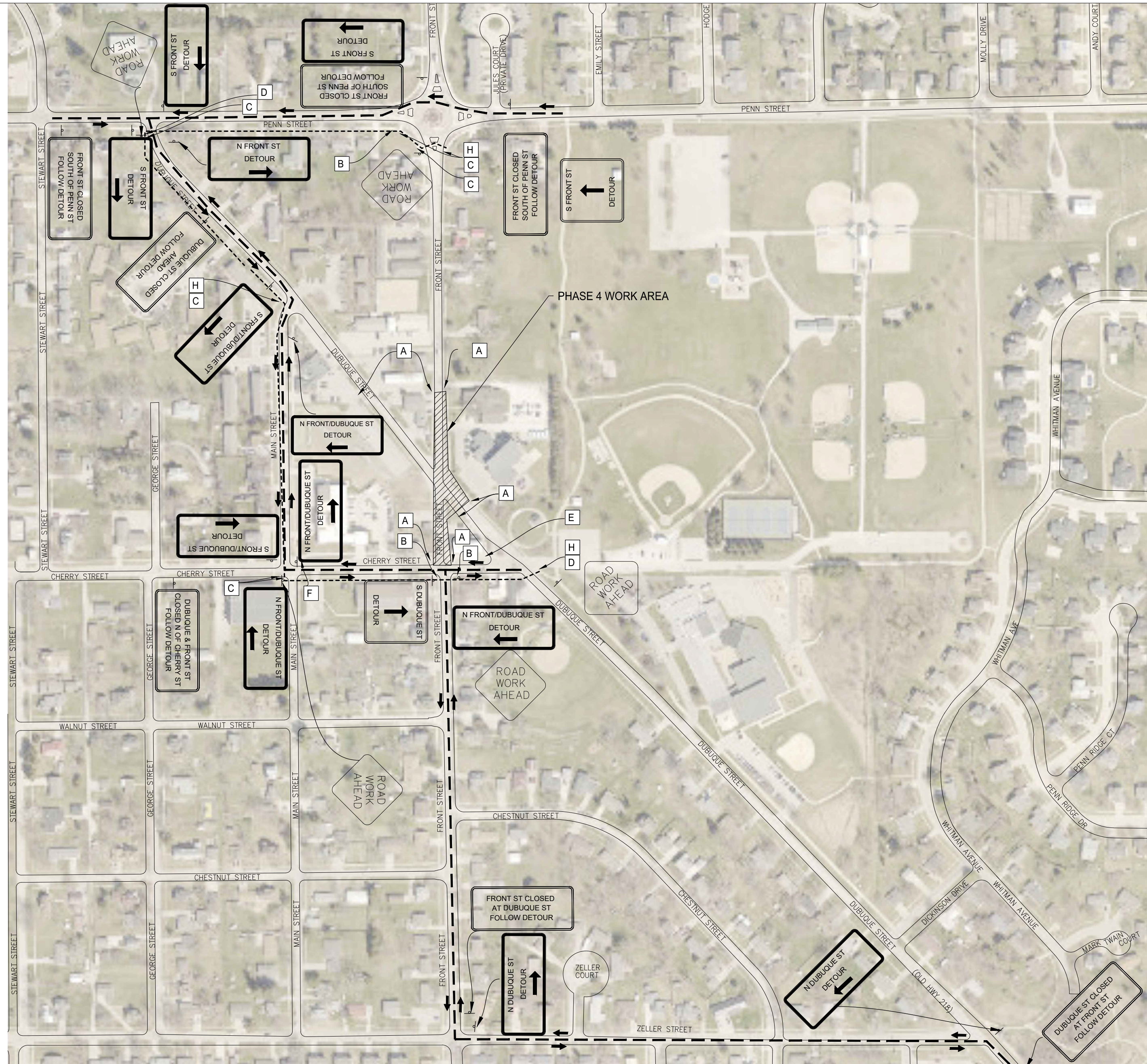
PEDESTRIAN SIGNAGE

- A** SIDEWALK CLOSED
- B** DETOUR (Upward arrow)
- C** DETOUR (Rightward arrow)
- D** DETOUR (Leftward arrow)
- E** SIDEWALK CLOSED AHEAD (Cross here)
- F** SIDEWALK CLOSED AHEAD (Cross here)
- G**
- H** SIDEWALK CLOSED AHEAD



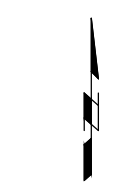
B PHASE 2 & 3 DETOUR
1"=300'

P:\Projects\12101070\Deliverables\Drawings\1_Civil\110-Phasing.dwg

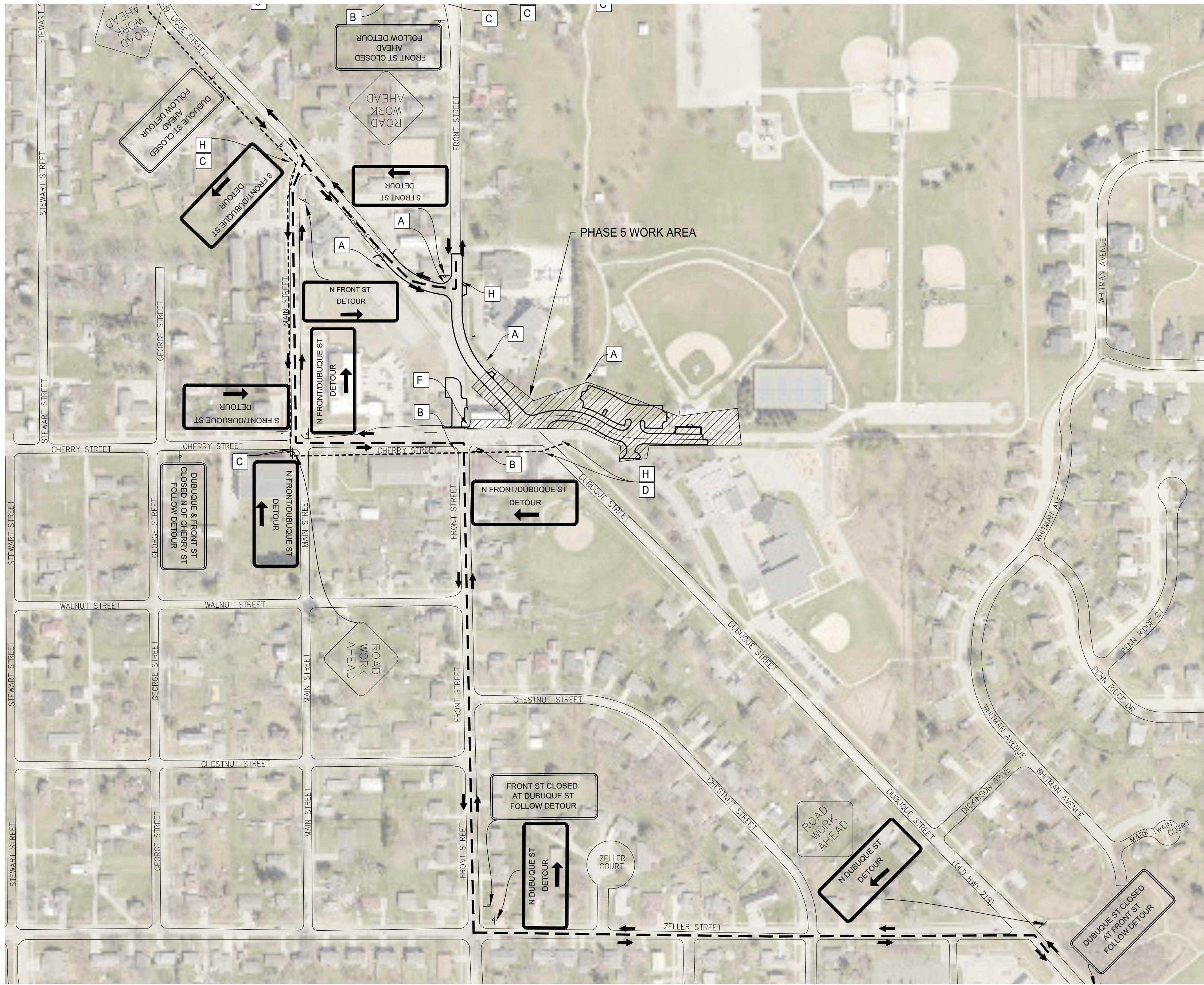


PEDESTRIAN SIGNAGE

- A
- B
- C
- D
- E
- F
- G
- H

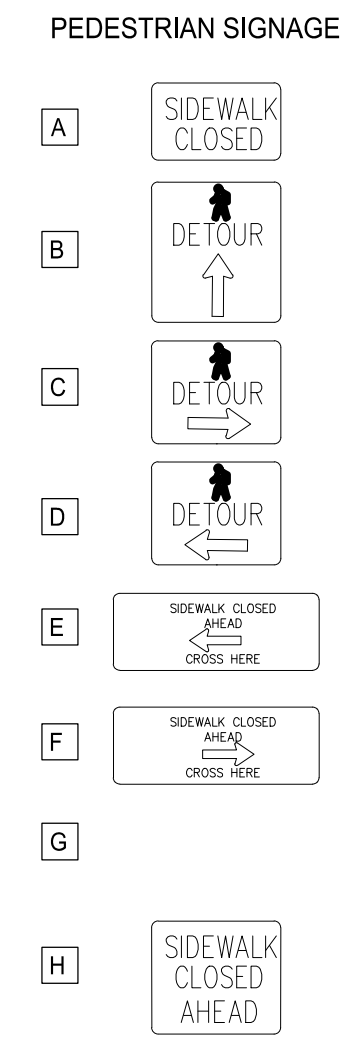
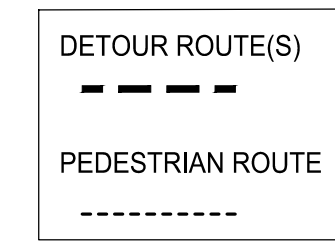
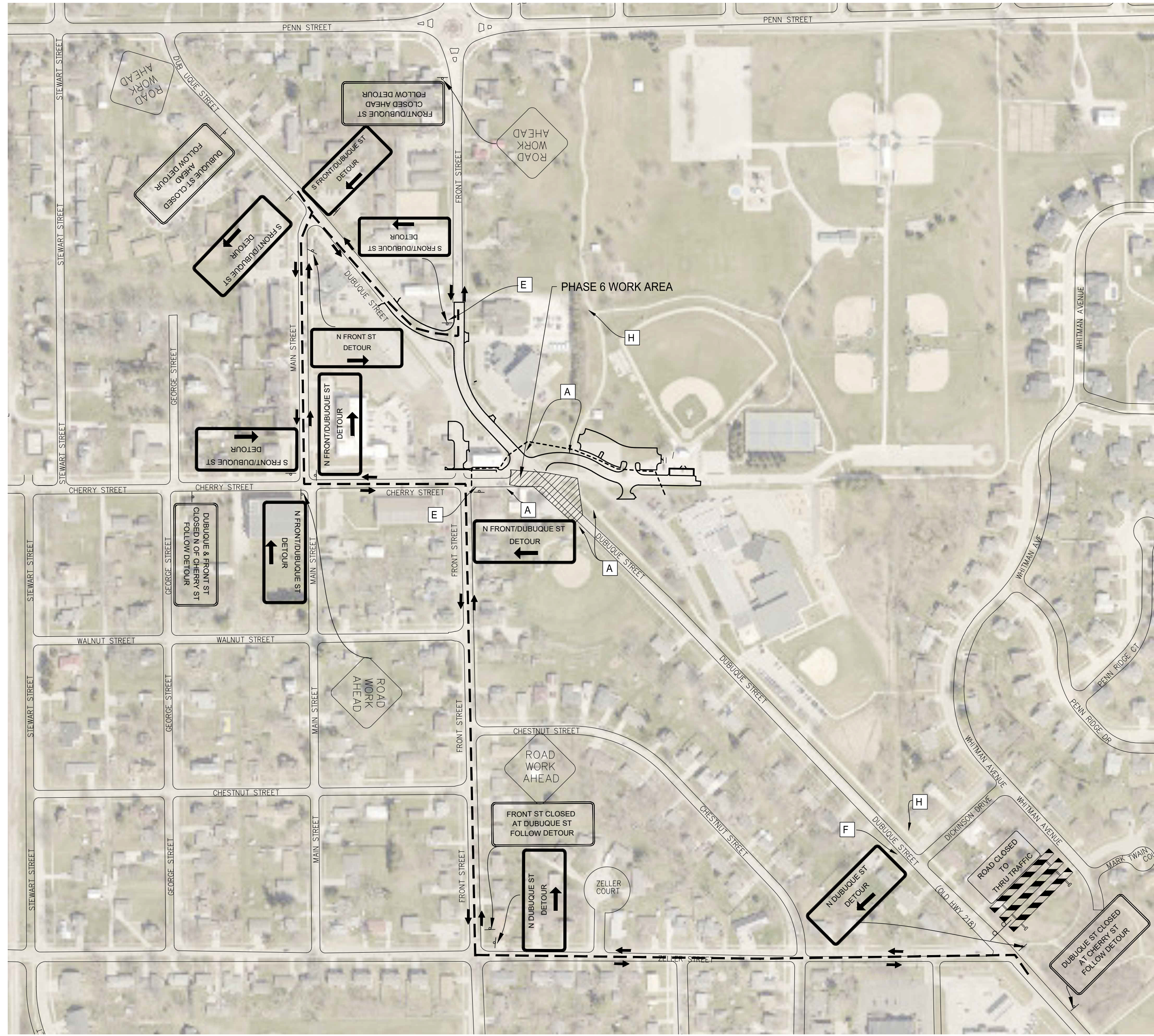


A PHASE 4 DETOUR
 1" = 300'



- PEDESTRIAN ROUTE

- PEDESTRIAN SIGNAGE
- A SIDEWALK CLOSED
 - B DETOUR (upward arrow)
 - C DETOUR (rightward arrow)
 - D DETOUR (leftward arrow)
 - E SIDEWALK CLOSED AHEAD (leftward arrow) CROSS HERE
 - F SIDEWALK CLOSED AHEAD (rightward arrow) CROSS HERE
 - G
 - H SIDEWALK CLOSED AHEAD



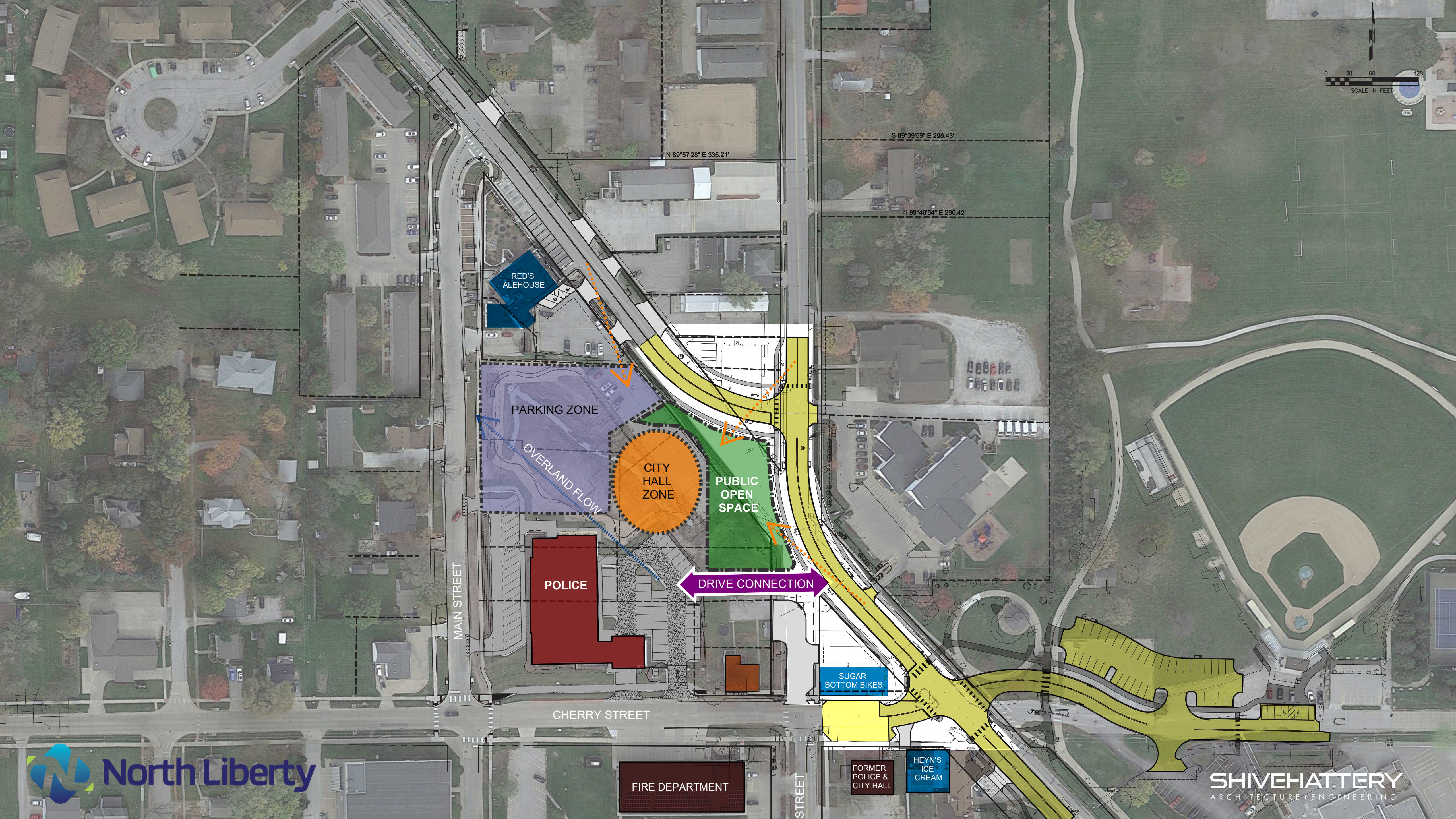
A PHASE 6 DETOUR
 1"=300'

P:\Projects\1201070\Deliverables\Drawings\1_Civil\110-Phasing.dwg









Q & A



ONLINE PROJECT OPEN HOUSE



northlibertyiowa.org/projects

Nick Bergus

nbergus@northlibertyiowa.org

(319) 626-5756

ONLINE PROJECT OPEN HOUSE

March 17 Dubuque Street at Cherry & Front
March 24 City Hall Future Civic Campus
March 31 Jones Boulevard and Planning
Each Thursday starting at noon.

ONLINE PROJECT OPEN HOUSE

March 17

Dubuque Street at Cherry & Front

March 24

City Hall Future Civic Campus

March 31

Jones Boulevard and Planning

Each Thursday starting at noon.

ONLINE PROJECT OPEN HOUSE

March 17

Dubuque Street at Cherry & Front

March 24

City Hall Future Civic Campus

March 31

Jones Boulevard and Planning

Each Thursday starting at noon.

ONLINE PROJECT OPEN HOUSE