



Red Fern Dog Park Map, Rules & Etiquette



Administration

(319) 626-5700



Email

pets@northlibertyiowa.org



Website

northlibertyiowa.org/dogpark

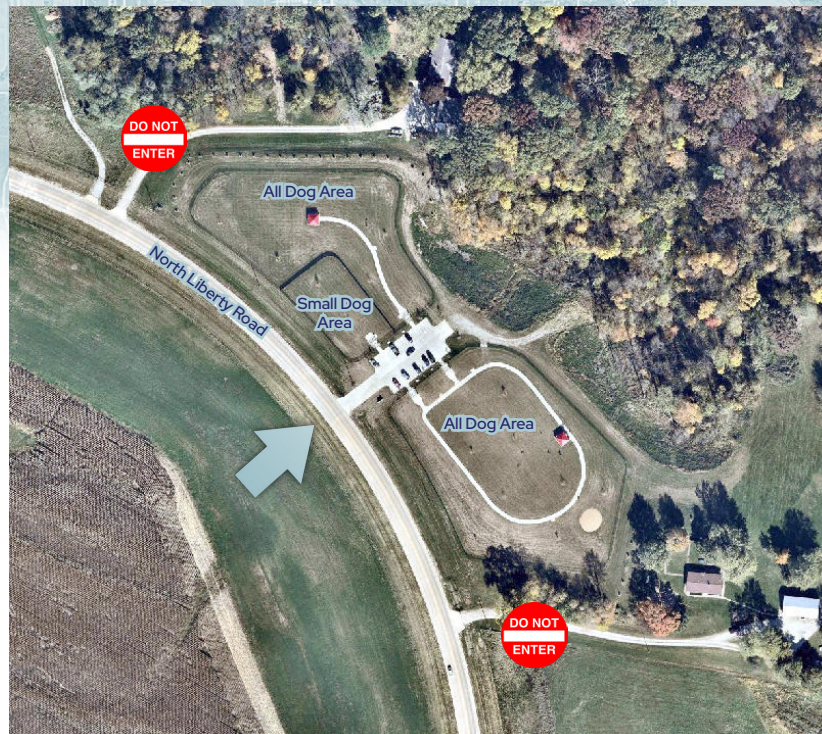
MAP

Red Fern Dog Park is located at 980 North Liberty Road, North Liberty, Iowa. The entire property extends over 11 acres, with 5.1 acres developed for public access.

The Dog Park is divided into three fenced sections: the southern area is 1.8 acres for all dogs, the northern area is 1.1 acres for all dogs, and the central area is 0.3 acres for small dogs only (18 inches or less at the shoulder), as indicated on the map below.

The dog park features a 20-stall parking lot, interior trails, benches, trash receptacles, and two park shelters. When the parking lot is full, then the park has reached the City's desired maximum capacity and no additional dogs may enter at that time.

Take care not to enter neighboring driveways or trespass onto private property.





RULES



By passing through the gates into the park yards, you agree to abide by the park, yard, human, and dog rules outlined in this document, posted at the Red Fern Dog Park, and online at the City's website. Violations and reported incidents will impact membership. Questions about the dog park passes, pet licensing forms, or the dog park should be communicated to the City by emailing pets@northlibertyiowa.org or by leaving a voicemail message at (319) 626-5700.

Strictly Prohibited from Property:

- Alcohol possession or use
- Cigarette or smokeless tobacco use
- Wheeled devices, except wheelchairs and strollers
- Large personal items on the ground, like duffel bags or chairs, which pose a tripping hazard
- Human food, except non-alcoholic beverages
- Dog food, except small training treats
- Glass containers
- Pronged, pinch, or choke collars
- Electronic training devices.

Yard Rules:

- Toys are allowed, taking into account the potential hazards to other dogs and your dog's willingness to share. Toy use must be discontinued, if requested.
- Small training treats are allowed. Do not share without explicit permission from dog handler.
- Small Dog Yard is for small dogs only (18 inches or less at the shoulder).

Dogs Must:

- Be at least 16 weeks old to enter.
- Be vaccinated for rabies.
- Not be in heat.
- Not have a communicable disease.
- Not be deemed "vicious," "dangerous," "potentially dangerous," or "aggressive" by any animal control agency, including the North Liberty Police Department.
- Carry your Red Fern Dog Park pass (and dog license tag, if a North Liberty resident) on your human.
- Stay visible to your human at all times and be ready to listen to a command.
- Leave if you are involved in a reportable incident, whether as the instigator or the target. Use the Dog Park Incident Report Form at northlibertyiowa.org/dogincident to submit an incident report.

Humans Must:

- Be at least 16 years old to enter; if under 16, you must be accompanied by a responsible adult (over 18 years old).
- Not be feeling sick.
- Not be handling and/or responsible for more than two dogs.
- Carry a leash for each dog.
- Use a leash on your dog(s) before entering and after leaving a yard, and remove any leash while dog(s) is in yard.
- Clean up after the dog(s) in your care. Biodegradable waste bags and trash receptacles are provided.
- Not conduct lessons or other for-profit activities on park property without written permission from the City of North Liberty.
- Stop displays of dominance, charging, excessive barking, hole-digging, and bullying.
- Be responsible for your dog's actions and behavior at all times, including compensation for repairs to damage of property or medical expenses.
- Communicate reportable incidents and rule violations to the City of North Liberty so they can be documented.

Other Park Rules:

- Red Fern Dog Park hours of operation are dawn (1 hour prior to sunrise) to dusk (1 hour after sunset). Vehicles remaining after dusk will be towed at the owner's expense.
- Yards must be vacated while maintenance tasks are being performed.
- Users of the North Liberty Dog Park do so at their own risk.
- Any City of North Liberty staff person has the right to ask users to leave park property.
- Violations of Dog Park rules may result in membership revocation.
- Other City of North Liberty park rules and ordinances also apply.



ETIQUETTE

Etiquette is appreciated! Let's encourage **D.O.G . F.R.I.E.N.D.S.**

DISCIPLINE: Displays of dominance, charging, and bullying are not welcome behaviors. Don't allow them!

OBSTACLES: Large objects are collision hazards to playing dogs... and will probably get peed on. Leave the lawn chair and the giant bag in the car.

GARBAGE: Show your North Liberty pride by maintaining a clean park! Place trash in the appropriate receptacles.

FOCUS: Give all the attention to your dog and your children, not your screen.

RECALL: Make sure your dog is ready to obey when you call.

INTRODUCTIONS: A polite hello is encouraged between all community members... for both human and canine friends.

EXERCISE BEFORE PARK: Over stimulation can lead to problems! Get all the energy out of your dog's brain and body before arriving.

NO FOOD & TREATS: Allergies and dieting dogs are amongst us. Don't share any edible items.

DISTANCE: Recognize when your dog might need a time out... or leave if you sense trouble. Always better to be safe, than sorry!

STEREOTYPING: Don't blame the breed for bad behavior. Courtesy comes with successful training and discipline.

HELPFUL COMMANDS WHILE AT THE PARK

SIT

Stay sitting until human says otherwise.

LIE DOWN

Lie down to calm down, focus on human, and wait for next command.

STAY

Do not move.

COME

Return to human without fail or delay.

DOG'S NAME

Attention off the distraction and to human.

FOCUS

Zone out everything else.

LEAVE IT

Ignore something that is tempting and/or potentially dangerous.

DROP IT

Drop something from mouth or stop a game that is turning aggressive.

WAIT

Stop midstride, pause for a moment, and focus attention on human.

HEEL

Walk next to human until told otherwise.

Also, teaching a dog not to eat something from strangers keeps the dog safe and prevents begging behavior.

DOG PARK INCIDENT REPORT FORM

Call 911 in the event of a medical emergency or bite to a human that breaks skin. If a wild animal is an immediate hazard to the public, call the Joint Communications Center at (319) 356-6800 and an officer will be dispatched.

Use the Dog Park Incident Report Form at northlibertyiowa.org/dogincident to submit an incident report when:

- You witness any failure to heed park rules;
- An incident results in property damage;
- You see a dog displaying signs of a communicable disease;
- Your own dog gets sick and used the park before symptoms appeared and within the contagious period;
- Abandoned animals are located on property; or for
- Other concerns about park visitors or pets.